

# GENEVA INTERNATIONAL CENTRE FOR HUMANITARIAN DEMINEING





**MINE / МИНЕ**



## WHO WE ARE

The Geneva International Centre for Humanitarian Demining (GICHD) is an international expert organisation based in Switzerland that works to eliminate mines, explosive remnants of war and other explosive hazards.

The GICHD provides advice and training on all components and stages of a mine action programme. By undertaking research, developing standards and disseminating knowledge, the GICHD supports capacity development in mine-affected countries. It works with national and local authorities to help them plan, coordinate, implement, monitor and evaluate mine action programmes. The GICHD also contributes to the implementation of the Anti-Personnel Mine Ban Convention, the Convention on Cluster Munitions and other relevant instruments of international law.

The GICHD has 50 staff members, including highly specialised experts. It receives funding from around 12 governments and organisations. Its governing body is the Council of Foundation, which brings together representatives from both mine-affected and donor countries. An Advisory Board made of the main GICHD partners provides advice to both the Council of Foundation and the GICHD management.

# MINE ACTION AND THE GICHD

More than one-third of the world's countries are contaminated by anti-personnel mines, cluster munitions and other explosive remnants of war (ERW). These weapons affect civilians indiscriminately and have a severe impact – socially, economically and environmentally – long after the armed conflict has ended.

Since the establishment of the first humanitarian mine action programmes in the late 80s, considerable progress has been made. However, the extent of the contamination worldwide is still unclear and a number of countries lack the technical expertise to address the challenge in the most efficient way. The GICHD's work aims to achieve greater clarity on the extent of contamination while promoting national capacities in affected countries.

**We work with the main actors of the mine action community: governments, national mine action authorities, national mine action centres, the United Nations, the International Committee of the Red Cross, international and national organisations, commercial companies and research centres.**

## The five pillars of mine action, as defined by the United Nations



Survey, mapping, marking and clearance



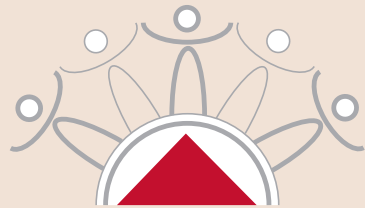
Mine risk education



Victim assistance, including rehabilitation and reintegration



Stockpile destruction



Advocacy to promote participation in international legal instruments that address landmines and ERW.

# PROGRAMMES



## ► OPERATIONS CONSULTING

**We work to increase the efficiency of the mine action sector globally by:**

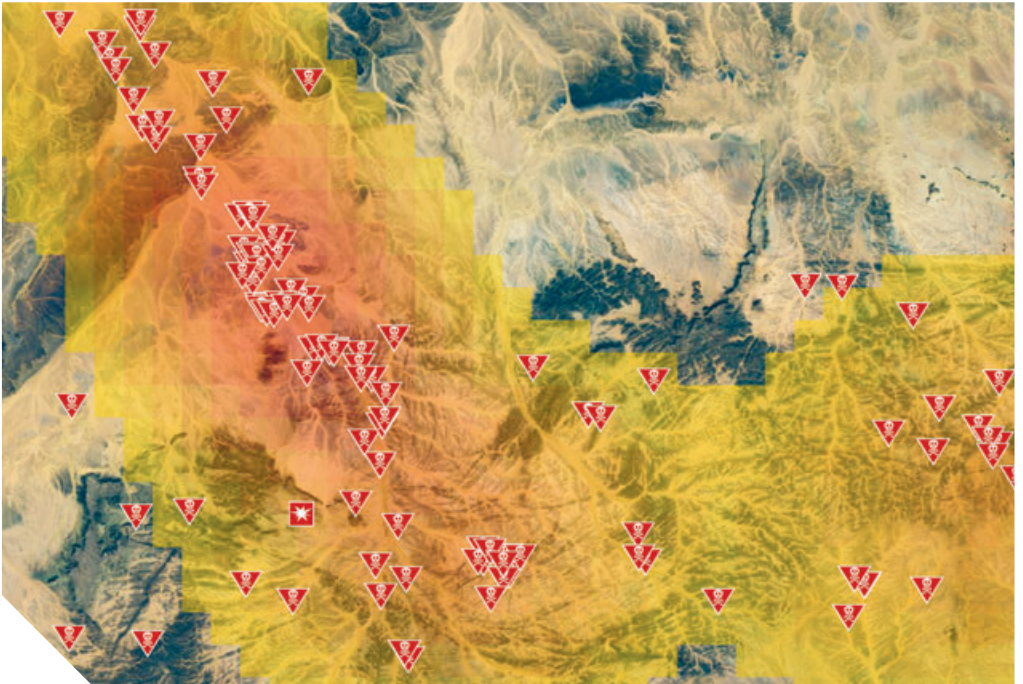
- Assisting in land survey and clearance, either manually or through the use of animals and machines
- Helping to ensure the safe release of land
- Speeding up the destruction of stockpiles and improving the safe management and storage of ammunition
- Promoting better contracting arrangements and insurance in mine action.

## ► MANAGEMENT CONSULTING

Improving how mine action programmes are managed is a key for us, which is why we focus on strengthening strategic management capabilities in mine-affected countries. This includes quality management, monitoring and evaluation. We focus on developing national evaluation capacities to ensure greater ownership and sustainability.

The GICHD also plays an important role in information management. Our Information Management System for Mine Action (IMSMA) provides states with decision support tools for the coordination and management of their mine action operations.

**IMSMA is currently in use in more than 60 countries around the world and is the United Nations' preferred information management system for mine action.**



## ▶ STANDARDS

On behalf of the UN, one of our core activities is to develop, maintain and promote the International Mine Action Standards (IMAS).

These standards provide guidelines to the global mine action community for the safe and efficient implementation of mine action programmes and projects. They form a frame for national mine action standards and operational procedures.

## ▶ INTERNATIONAL HUMANITARIAN LAW

The GICHD contributes to the development and implementation of instruments of international law that address the problem of explosive hazards through technical, logistical and administrative support. This helps facilitate informed discussions and negotiations in meetings related to humanitarian disarmament treaties and processes.

### **The instruments of international law which we help implement and through which we work include:**

- The Anti-Personnel Mine Ban Convention (APMBC)
- The Convention on Cluster Munitions (CCM)
- The Convention on Certain Conventional Weapons (CCW).





## ► OUTREACH

Sharing information is central to our work at the GICHD, either through our publications or our website ([www.gichd.org](http://www.gichd.org)). We translated mine action guidelines and standards into other languages to better reach out to people in their home countries. We also initiated three linguistic outreach programmes (French, Arabic and Persian).

### **We provide training and advisory services in the following areas:**

- Strategic management
  - Linking mine action, security and development sectors
  - Quality management, monitoring and evaluation
- Operations
  - Land release: operational efficiency, survey and clearance
  - Mechanical and animal demining systems
  - Contracting, liability and insurance
  - Stockpile destruction and ammunition safety management
- Information management
  - Information management capacities development
  - Information tool maintenance and development: IMSMA software
- Standards
- Mine risk education
- CCM and APMBC implementation.



**Geneva International Centre  
for Humanitarian Demining**

PO Box 1300

CH – 1211 Geneva 1, Switzerland

[info@gichd.org](mailto:info@gichd.org)

**Follow us on**

[gichd.org](http://gichd.org)

[facebook.com/gichd](https://facebook.com/gichd)

[twitter.com/theGICHD](https://twitter.com/theGICHD)